

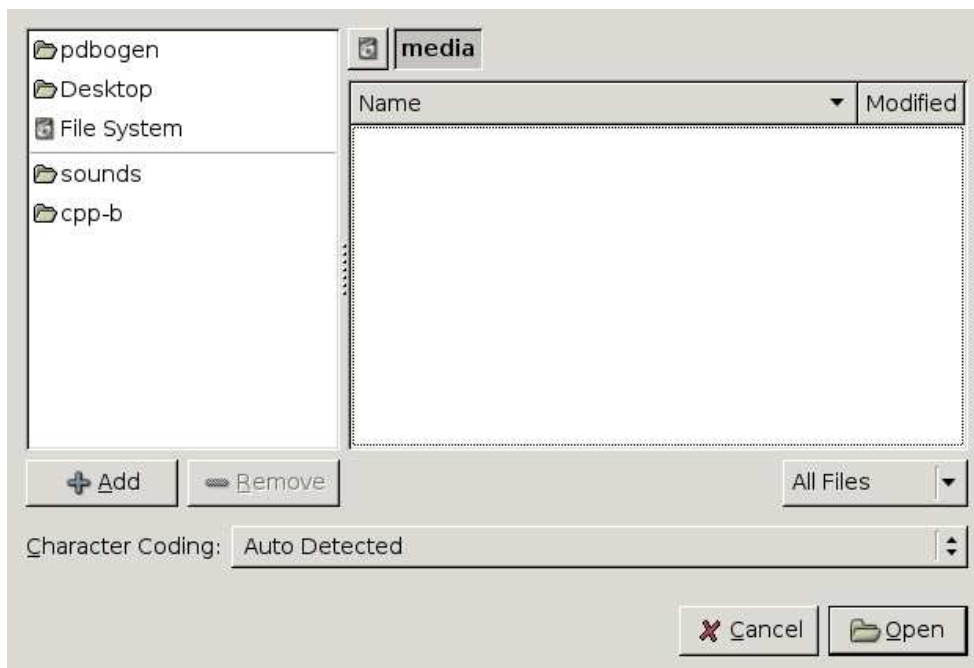
HOWTO: Use a USB Flash Drive or USB Hard Drive in the Computer Lab

Mounting USB storage devices in the computer lab uses software called “AutoFS.” All you need to do is connect your storage device to the computer, and you can access it by specifying the path: `/media/usbdrive`

It is important to note that since AutoFS does not access the device until **after** you access the folder, if you try to list the contents of `/media` (or if you are using a GUI file browser), it will seem to be empty.

Just go ahead and access `/media/usbdrive` anyway.

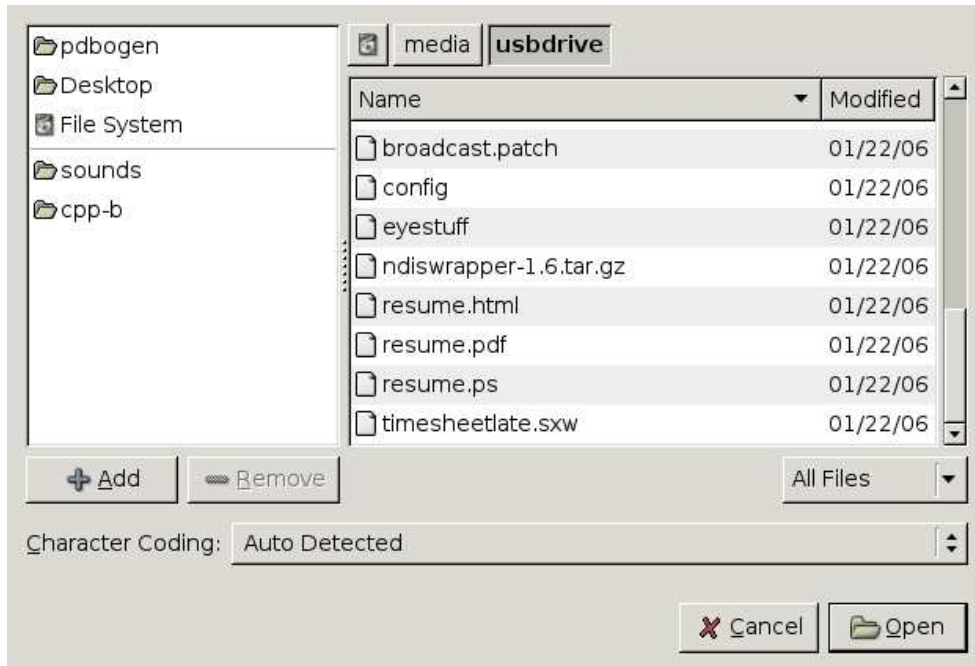
For example, the standard Gnome file dialog will show the following if you try to navigate to `/media`:



However, if you start typing `/media/usbdrive`, a dialog like so will appear:



Select 'Open', and you will be able to access the files stored on your USB device:



Warning: AutoFS will automatically prepare the device for removal a few seconds after it is no longer being accessed. Please be certain that no programs are currently accessing `/media/usbdrive` or any files stored on it, or else removing the device may leave the system in a bad state.

To check if it is okay to disconnect the USB device, open up a terminal and type `mount`. You may remove your USB device if you do **NOT** see a line that looks like:

```
/dev/sda1 on /media/usbdrive type vfat (rw,nosuid,nodev,sync,umask=000)
```